



TRANSPORTATION CABINET

Frankfort, Kentucky 40622
www.transportation.ky.gov/

Steven L. Beshear
Governor

Michael W. Hancock, P.E.
Secretary

November 16, 2011

CALL NO. 303
CONTRACT ID NO. 112976
ADDENDUM # 2

Subject: Laurel County, FE02 063 0192 B00067N
Letting November 18, 2011

- (1) Revised - Special Note - Pages 11-12 of 77
- (2) Revised - Bridge Drawing - Page 28 of 77
- (3) Added - Bridge Drawings - Pages 30(a)-30(b) of 77
- (4) Revised - Bid Items - Pages 76-77 of 77

Proposal revisions are available at <http://transportation.ky.gov/contract/>.

If you have any questions, please contact us at 502-564-3500.

Sincerely,

A handwritten signature in blue ink that reads "Ryan Griffith".

Ryan Griffith
Director
Division of Construction Procurement

RG:ks
Enclosures



An Equal Opportunity Employer M/F/D

SPECIAL NOTE FOR BRIDGE RESTORATION AND WATERPROOFING WITH CONCRETE OVERLAYS

- I. DESCRIPTION.** Perform all work in accordance with the Kentucky Transportation Cabinet, Department of Highway's 2008 Standard Specifications for Road and Bridge Construction and applicable Supplemental Specifications, the Standard Drawings, this Note, and the attached detail drawings. Section references are to the Standard Specifications.

This work consists of the following: (1) Furnish all labor, materials, tools, and equipment; (2) Remove the existing overlay or machine prep the existing slab; (3) Complete full-depth and partial depth repairs as directed by the Engineer; (4) Repair/replace damaged and corroded reinforcing bars; (5) Place new concrete overlay and epoxy-sand slurry in accordance with Section 606; (6) Complete asphalt approach pavement; (7) Maintain and control traffic; and (8) Any other work specified as part of this contract.

All construction will be in accordance with Section 606 unless otherwise specified.

II. MATERIALS.

- A. Latex Concrete.** See Section 606.03.17.
- B. Class "M" Concrete.** Use either "M1" or "M2". See Section 601.
- C. Bituminous Asphalt.** Use CL4 ASPH SURF 0.38A PG76-22.
- D. Epoxy-Sand Slurry.** See Section 606.03.10.

III. CONSTRUCTION.

- A. Remove Existing Overlay.** In addition to Section 606.03.03, totally remove the existing concrete overlay by milling. See Special Note for Use of Hydrodemolition Method.
- B. Partial Depth Slab Repair.** Remove areas determined to be unsound by the Engineer via Hydrodemolition or via hand held jackhammers weighing less than 40lbs. No wrecking balls, drop hammers, or rig-mounted breakers are allowed. Repair/Replace all damaged or severely corroded reinforcing bars prior to partial depth repair operation. The Department will not measure material removal and will consider this work incidental to the bid item "PARTIAL DEPTH PATCHING".
- C. Asphalt Approach Pavement.** Mill each existing asphalt approach for a distance of **10'** from the bridge end. Remove the bituminous material uniformly by making an edge key, so as to provide a smooth transition to the finished bridge when a new bituminous overlay of compacted depth of approximately 1½" is added to the approaches. The grinding depth may vary depending of the condition of the existing approach and final elevation of bridge end. Dispose of all removed material away from the site.
- D. Surface Texturing.** Texture the concrete surface of the overlay in accordance with Section 609.03.10.

- IV. MEASUREMENT.** See Section 606 and the following:

A. Latex Modified Concrete (1 1/2 inches thick). The Department will measure the quantity in cubic yards using the theoretical volume as follows for each bridge:

$$063B00067N \quad ((417' \times 26') + (42' \times ((26' + 36') \times .5))) \times 1.50'' = 56.2 \text{ cuyd}$$

B. Latex Modified Concrete for Partial Depth Patching. The Department will measure the quantity in cubic yards by deducting the theoretical volume of bridge deck overlay (LMC) from the total volume (as indicated by the batch quantity tickets) of Concrete required to obtain the finished grade shown on the Plans or established by the Engineer.

C. Remove Existing Overlay. The Department will measure the removal of the existing overlay in square yards, which shall include all labor, equipment, and material needed to complete this work.

D. Steel Reinforcement. The Department will measure any reinforcing steel necessary for the partial or full depth patch in pounds, which shall include all labor, equipment, and material needed to complete this work.

E. Asphalt Approach Pavement. The Department will measure the quantity in square yards, which shall include all labor, equipment, and material needed to complete this work.

V. PAYMENT. See Section 606 and the following:

A. Latex Modified Concrete (1 1/2 inches thick). The Department will make payment for the Latex Modified Concrete under bid item #08534 "CONCRETE OVERLAY – LATEX" for the quantity in cubic yards complete in place.

B. Latex Modified Concrete for Partial Depth Patching. The Department will make payment for the Partial Depth Patching under bid item #24094EC "PARTIAL DEPTH PATCHING". Payment will be for the quantity per cubic yard complete in place.

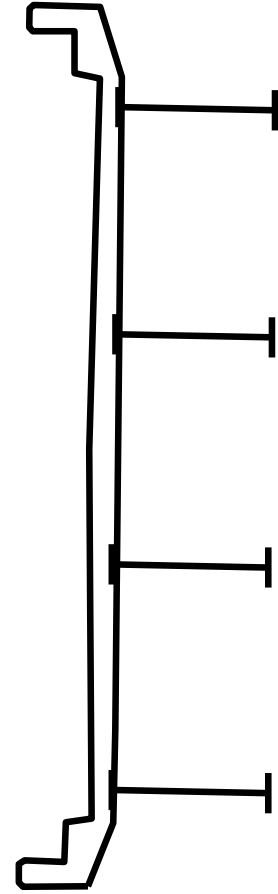
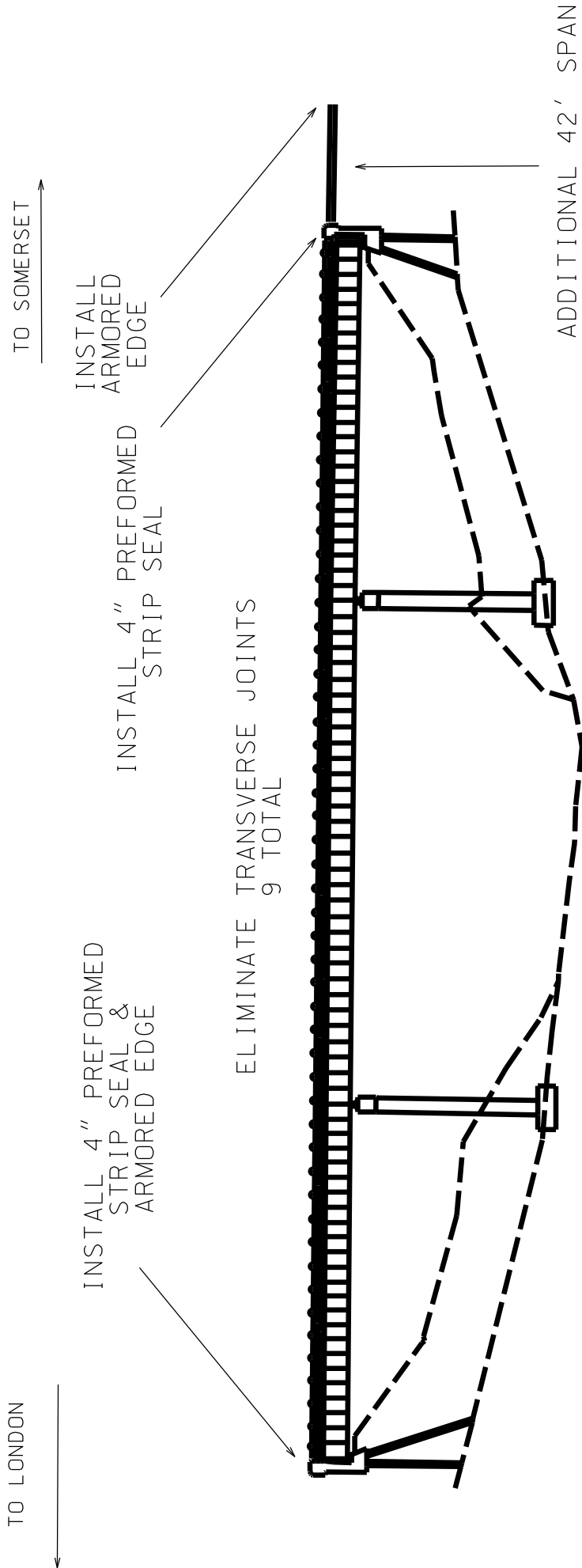
C. Remove Existing Overlay. The Department will measure the removal of the existing overlay in square yards, which shall include all labor, equipment, and material needed to complete this work.

D. Steel Reinforcement. The Department will make payment for steel reinforcement, if necessary, under bid item #08150 "STEEL REINFORCEMENT". Payment will be at the unit price per pound.

E. Asphalt Approach Pavement. The Department will make payment for the completed and accepted quantity of this work under the bid item #03304 "BRIDGE OVERLAY APPROACH PAVEMENT".

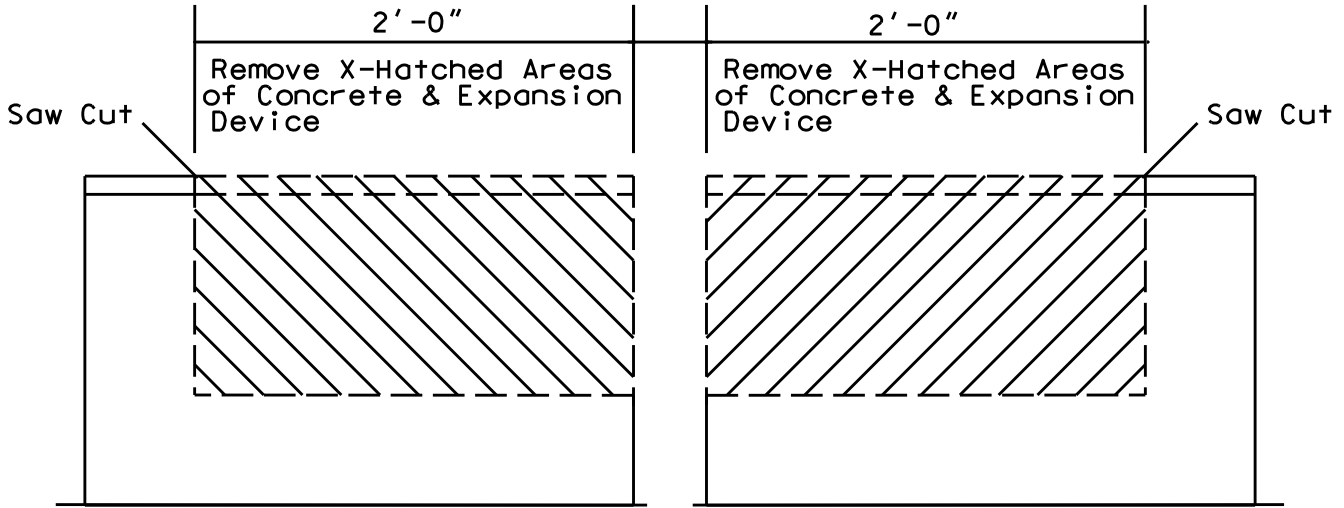
063B00067N

CONTINUOUS WELDED STEEL PLATE GIRDERS - 417' TOTAL LENGTH
NO SKEW

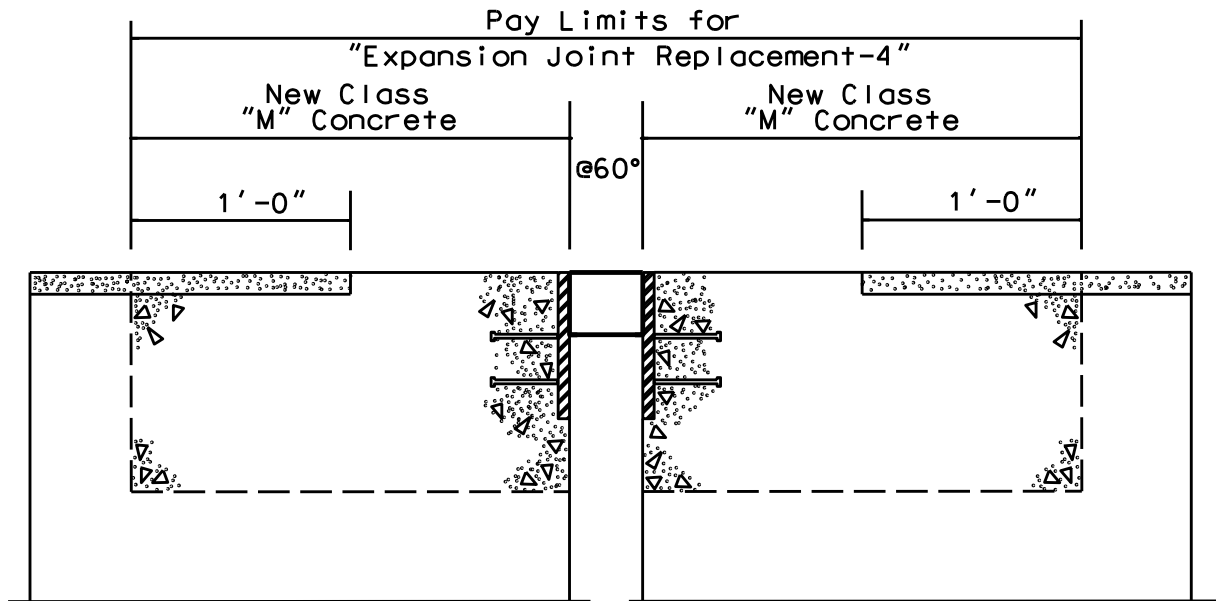


EXPANSION DAM DETAIL

Expansion Joint Replacement - 4" INTERIOR JOINT

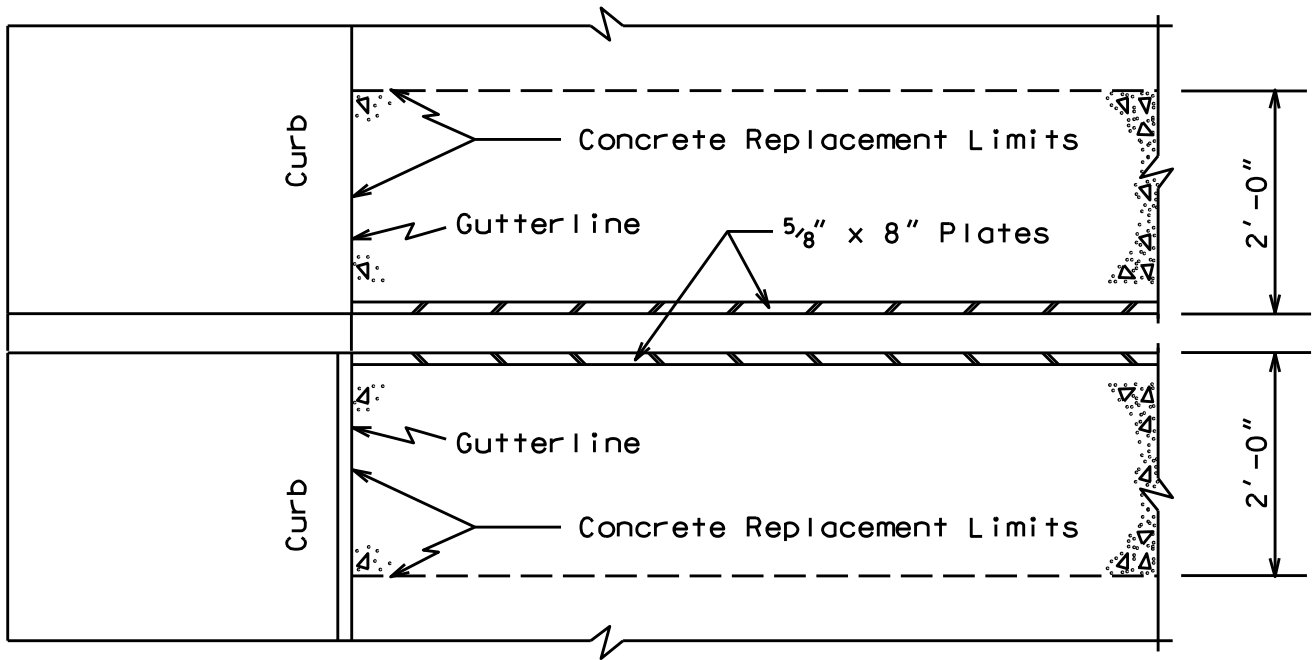


EXISTING SECTION

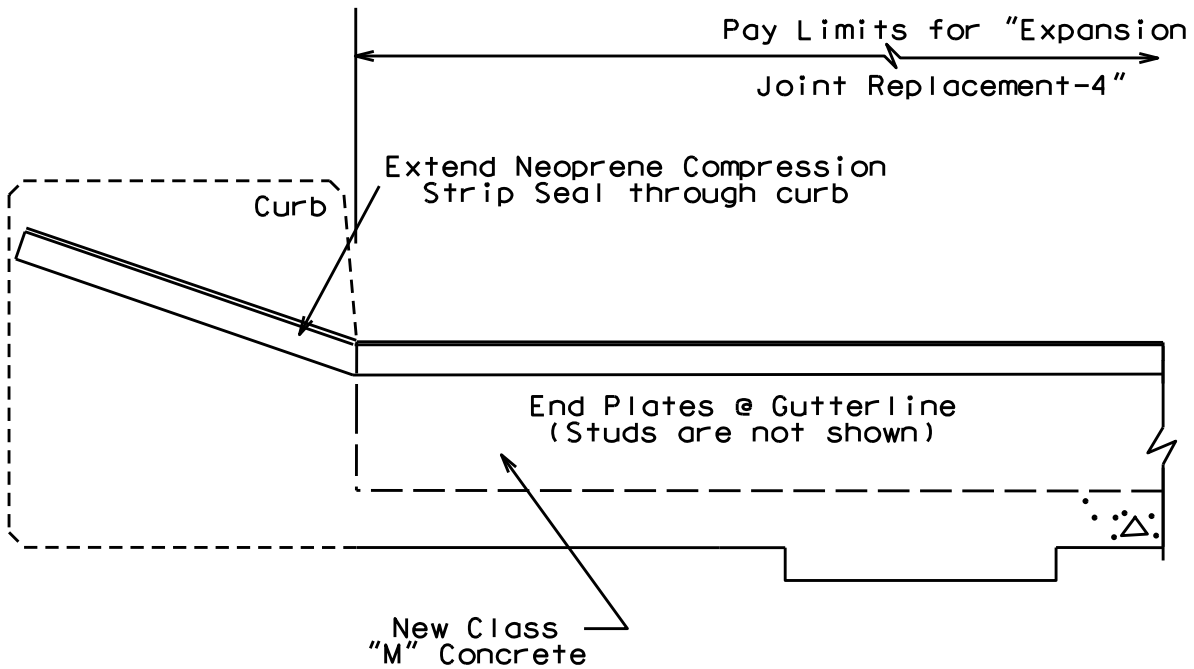


PROPOSED SECTION

CURB SECTION



PLAN VIEW @ CURB



PROPOSED SECTION @ CURB

CONTRACT ID: 112976
COUNTY: LAUREL
PROPOSAL: FE02 063 0192 B00067N

PAGE: 1
LETTING: 11/18/11
CALL NO: 303

LINE NO	ITEM	DESCRIPTION	APPROXIMATE QUANTITY	UNIT	UNIT PRICE	AMOUNT
SECTION 0001 BRIDGE						
0010	02650	MAINTAIN & CONTROL TRAFFIC APPLIES TO B00067	(1.00)	LS		
0020	02653	LANE CLOSURE	2.000	EACH		
0030	04933	TEMP SIGNAL 2 PHASE	1.000	EACH		
0040	02562	SIGNS	149.000	SQFT		
0050	06549	PAVE STRIPING-TEMP REM TAPE-B	500.000	LF		
0060	06550	PAVE STRIPING-TEMP REM TAPE-W	1,000.000	LF		
0070	06551	PAVE STRIPING-TEMP REM TAPE-Y	2,000.000	LF		
0080	08510	REM EPOXY BIT FOREIGN OVERLAY (REVISED: 11-16-11)	1,350.000	SQYD		
0090	08549	BLAST CLEANING (REVISED: 11-16-11)	1,690.000	SQYD		
0100	08534	CONCRETE OVERLAY-LATEX (REVISED: 11-16-11)	56.200	CUYD		
0110	24094EC	PARTIAL DEPTH PATCHING	33.500	CUYD		
0115	08526	CONC CLASS M FULL DEPTH PATCH	10.000	CUYD		
0120	08150	STEEL REINFORCEMENT	3,106.000	LB		
0130	03299	ARMORED EDGE FOR CONCRETE (REVISED: 11-16-11)	62.000	LF		
0141	03298	EXPAN JOINT REPLACE 4 IN	52.000	LF		
0145	03300	ELIMINATE TRANSVERSE JOINT	270.000	LF		
0150	08504	EPOXY SAND SLURRY (REVISED: 11-16-11)	340.000	SQYD		
0160	03304	BRIDGE OVERLAY APPROACH PAVEMENT (REVISED: 11-16-11)	69.000	SQYD		
0170	06514	PAVE STRIPING-PERM PAINT-4 IN (REVISED: 11-16-11)	1,916.000	LF		
SECTION 0002 DEMOBILIZATION						

CONTRACT ID: 112976
COUNTY: LAUREL
PROPOSAL: FE02 063 0192 B00067N

PAGE: 2
LETTING: 11/18/11
CALL NO: 303

LINE NO	ITEM	DESCRIPTION	APPROXIMATE QUANTITY	UNIT	UNIT PRICE	AMOUNT
0200	02569	DEMOBILIZATION (AT LEAST 1.5%)		LUMP		
		TOTAL BID				